

**Appendix (2)**

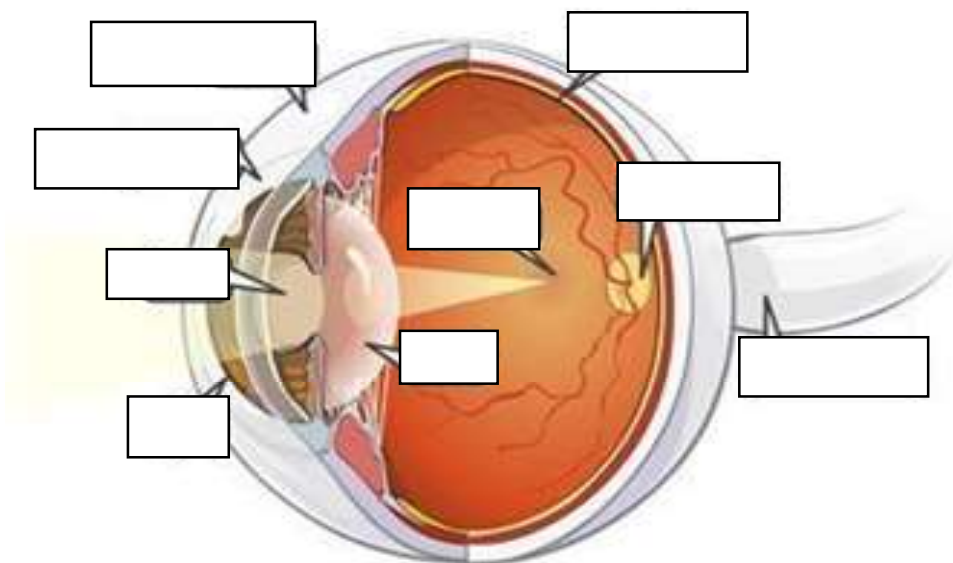
Creative Secondary School - S.2 Integrated  
Science Unit 10 – Sensing the Environment  
Student Handout

Name: \_\_\_\_\_ Class: \_\_\_\_\_ ( ) Date: \_\_\_\_\_

Part A) KWL chart

What I already know (K)	What I want to know (W)	What I have learned (L)
5 senses of human: _____ _____ _____ 3 facts you know about eyes: _____ _____ _____	3 facts you want to know more about eyes: _____ _____ _____ _____	Name 3 eyes structure and their corresponding functions: 1. _____ 2. _____ 3. _____ 3 eye diseases you learnt: _____ _____

Part B) Eye structure



Part C) Causes of eye diseases

**1. Glaucoma**

Causes:

1. Fail to \_\_\_\_\_ between the amount of \_\_\_\_\_ produced and the amount that drains away.
2. \_\_\_\_\_
3. \_\_\_\_\_ Damage

**2. Floaters**

Causes:

1. \_\_\_\_\_ eye changes
2. \_\_\_\_\_ the back of the eye
3. \_\_\_\_\_ in the eye
4. \_\_\_\_\_
5. Eye \_\_\_\_\_ and eye \_\_\_\_\_ (recovery by yourself)

**3. Cataract**

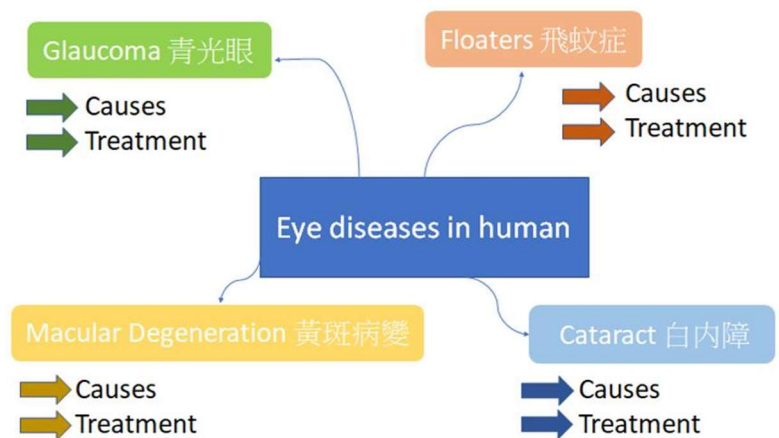
Causes:

1. \_\_\_\_\_ eye changes
2. \_\_\_\_\_
3. Excessive exposure to \_\_\_\_\_
4. \_\_\_\_\_

**4. Macular Degeneration**

Causes:

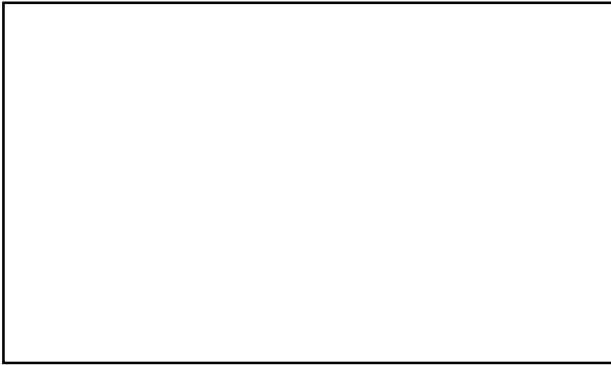
1. \_\_\_\_\_ eye change
2. \_\_\_\_\_
3. \_\_\_\_\_: more common in Caucasians
4. Having \_\_\_\_\_
5. Being \_\_\_\_\_
6. \_\_\_\_\_



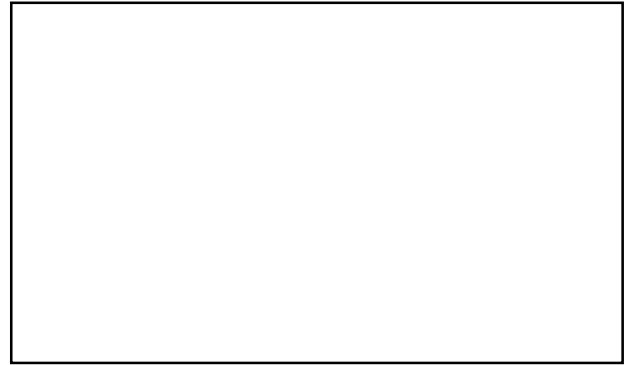
Part D) "Enter the special worlds" - Matching game.

Please draw the 4 special glasses on the boxes and write down one symptom in the blanks.

**Glaucoma**



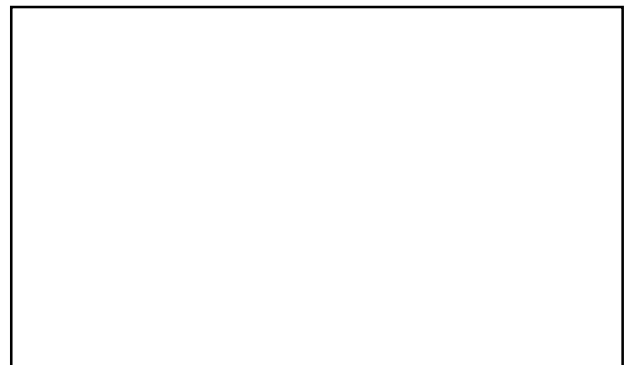
**Floaters**



**Macular Degeneration**



**Cataract**



Part E) Treatments of eyediseases

1. **Glaucoma**

Treatment: \_\_\_\_\_

2. **Floaters**

Treatment: \_\_\_\_\_

3. **Macular Degeneration**

Treatment: \_\_\_\_\_

4. **Cataract**

Treatment: \_\_\_\_\_

